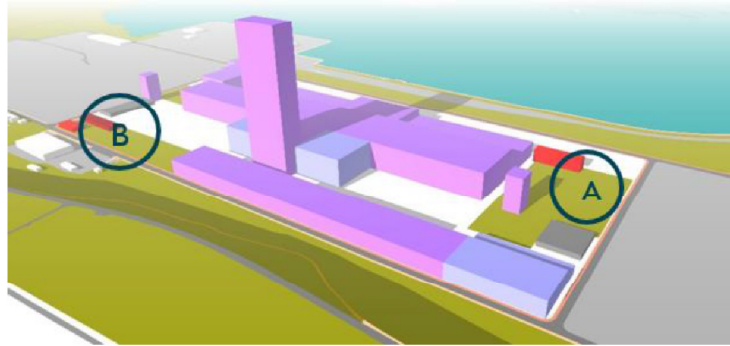




© 2022 RPS Group
 Notes
 1. This drawing has been prepared in accordance with the scope of RPS's appointment with its client and is subject to the terms and conditions of that appointment. RPS accepts no liability for any use of this document other than by its client and only for the purposes for which it was prepared and provided.
 2. If received electronically it is the recipients responsibility to print to correct scale. Only written dimensions should be used.

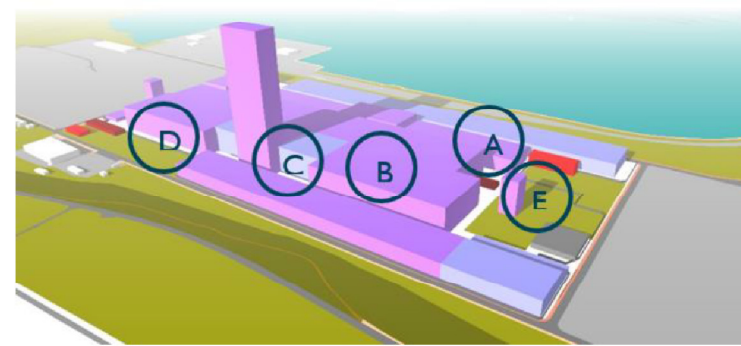
Iteration 1



The first layout was developed to accommodate the process design within the confines of the site to achieve the optimum process flow.

- Definition of Main Entrance Zone (A) with Security Gatehouse and Offices to accommodate 200 Administrative staff. Comprising landscape and car parking to create campus feel to working environment.
- Definition of Secondary Entrance Zone (B) with Welfare Facilities for blue-collar workers operating the plant in shifts, approximately 175 per shift. Facilities Maintenance along with associated car parking to accommodate shift change within a landscaped campus environment.
- Storage carousels considered as stand-alone structures, outside as per standard practice.
- Truck holding area located at the south of the site adjacent to Zone B, with potential second access gate.

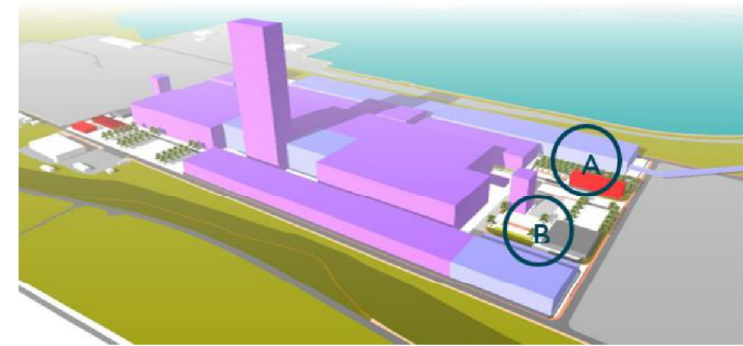
Iteration 2



During the design process, and coordination with the process engineering, access and circulation within the site was reviewed with regard to material deliveries and safety in manoeuvring.

- A. Protection to Storage Carousels on western edge to deal with winter conditions.
- B. Definition of Degassing Chambers and extension of main factory hall to accommodate them.
- C. Material loading areas defined and tested from a vehicular circulation point of view: Loading Docks and Level Access
- D. One-way circuit established and the process layout modified to better accommodate it.
- E. Truck holding area relocated to North to concentrate control of deliveries on the main gate

Iteration 3



Further refinements to the layout undertaken in parallel with working up of the process layout and reviews by the multi-disciplinary team.

- A. Relocation of Offices (5) to achieve better relationship with storage Carousels (12) and to create a positive site frontage addressing the entrance from the North.
- B. Preliminary location of UPS and Standby generators by Utilities Compound (6).

Legend

Rev	Description	By	CB	Date



20 Western Avenue, Milton Park, Abingdon, Oxfordshire, OX14 4SH
 T: +44(0)1235 821 888 E: rps@rpsgroup.com

Client **XLCC Ltd**
 Project **XLCC Hunterston**
 Title **Iterations of the parameters plan**

Status	Drawn By	PM/Checked By
ISSUE	MP	MB
Project Number	Scale @ A3	Date Created
NP12180	NTS	FEB 2022
Figure Number		Rev
3.1		-